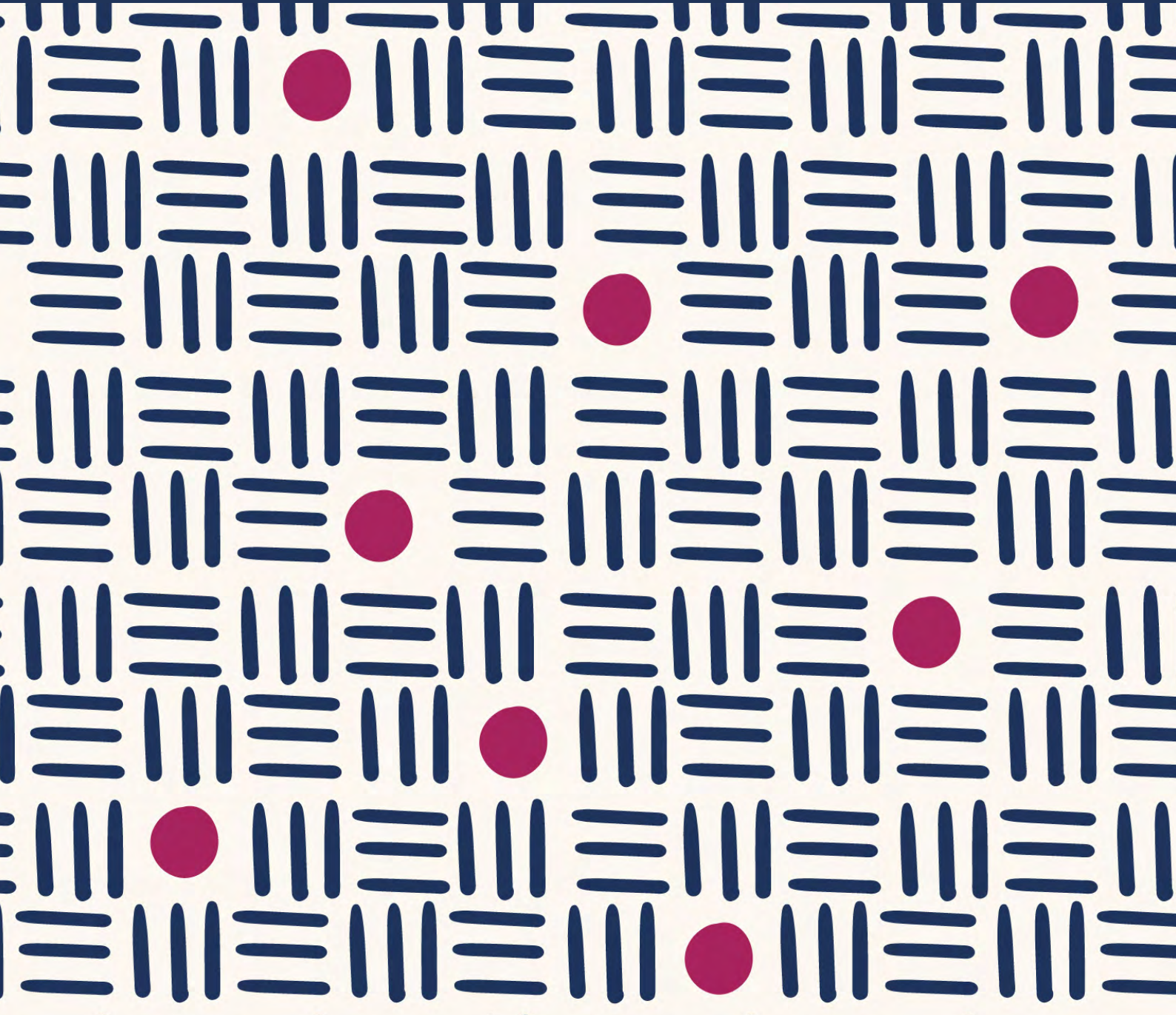


Mlijaa

4

NIŊMAA MLI MLAI



WIEMO KE NITSUMO

Ga wiemo le ŋmaa mli mlai

HIËGBELEM

Mlijaa nɛɛ baatsɔɔ mlai ni yoo Ga wiemo le ŋmaa mli. Gbejianotoi nɛɛ baagba mlai ni yoo gbeiwiemoi, feemowiemoi, najiangbei ke kadiloi/sutsɔɔloi le ahe sane.. Wɔbaakwe mlai ni yoo gbeiwiemoi ahe klenklen, ni najiangbei baanyie sɛɛ, no sɛɛ le kadiloi/sutsɔɔloi, keke le feemowiemoi ke mligbalaloi. Enɛ haa bo nilee ye mlai ke bo ni ake gbeiwiemoi, najiangbei, kadiloi/sutsɔɔloi, feemowiemoi ke mligbalaloi tsɔɔ nii ahaa ye Ga wiemo ni okaseɔ le mli. Obaanye oke mlai le ato wiemoi krokomei tamɔ Blofo wiemo le he.

Nikasemo le mli Otii

1. Oke mlai ni yoo gbeiwiemoi ke najiangbei ahe aŋmalaa sanemuji/wiemomuji.
2. Oke mlai ni yoo kadiloi ke sutsɔɔloi ahe aŋmalaa sanemuji.
3. Oke mlai ni yoo feemowiemoi ke mligbalaloi ahe aŋmalaa sanemuji.

Susumo Otii

- Gbeiwiemoi damoo shi ake feeloi (subjects), feelo (direct) ke helo/nɔnalɔ
- Najiangbei hu damoo shi ake feelo aloo nɔnalɔ loo helo ye sanɛŋmaa mli.
- Kadiloi loo sutsɔɔloi kadio gbeiwiemoi. Ye Ga wiemo le mli le amefoo gbeiwiemoi ni amekadio le asɛɛ nyiemo..
- Feemowiemoi tsɔɔ nifeemoi ni yoo sanemuu mli loo be mli ni nifeemo le tee no. Ga wiemo le etsiii feemowiemoi abo ni okebaatsu nii ye sanemuu mli naa. Gbeiwiemoi ke feemowiemoi damoo shi ankroankro ye Ga wiemo le mli, beja feemowiemo ni nyie najiangbei sɛɛ, no le aŋmaa amɛ atsa.
- Mligbalaloi tsɔɔ bo ni nifeemo ko tee no ha mli, ni enyɛɔ egbalaa mligbalaloi krokomei hu amli etsɔɔ..

GBEIIWIEEMŌI

Wŏkwe gbeiwiemŏi ye naagbee mlijaa le mli. Wŏtse gbeiwiemŏi srŏtoi le ni wŏha nŏkwemŏ nibii ni wŏgba he sane, ke kui amlī ni eko fēe eko yŏŏ.

Sanebimŏi ahesusumŏ: Ani okaio gbeiwiemŏ henŏi le? Ŋmaa owo wolo mli.

Gbeiwiemŏi ji gbŏmēi agbei, hei, kooloi ke nibii. Efŏŏ kaa akē sanemuu hiēŏ kehoŏŏ kwraa le gbeiwiemŏ kome. Ni efŏŏ kaa akē ekē ‘le’, nē, ni, loo eko loo ko.

Najiangbei

Akē najiangbei le, bo, mi, e, amē, wŏ, ke ekrokomei damŏŏ shi haa gbeiwiemŏ ye sanemuu mli. Amenyeŏ amedamŏŏ shi akē gbeiwiemŏ sanekuku.

Kaimŏ akē: Ye Ga wiemŏ le mli le, abē najiangbei ni damŏŏ shi haa yoo loo nuu ankroankro shi wiemŏkuli le damŏŏ shi haa amē fēe. Ani nakai ni ye owiemŏ ni okaseŏ le mli? Okē onaanyo asusu he koni nyēke nyesanegbaa le ayahaa tsŏŏŏ le.

Ye nikasemŏ nēe mli le wŏkwe niŋmaa mlai ni kŏŏ gbeiwiemŏi ke najiangbei keninŋmaa he.

Nifeemŏ

Nyēkwēa sini nēe koni nyēke nyēnanemēi agbaa gbeiwiemŏi ni yŏŏ mli le anitsumŏi ahe sane ketŏŏŏ nyējwēŋmŏ.

[function of nouns YouTube video - \(https://www.youtube.com/watch?v=rURutv7N_ns\)](https://www.youtube.com/watch?v=rURutv7N_ns)

Agbenē okē otii ni oŋmala ye sini le mli le ato nibii ni baa nēe ahe

Mlai/bŏ ni aketsuŏ nii

Gbeiwiemŏi ni tsuŏ nii akē feelŏi.

1. Mlai ni kuraa gbeiwiemŏ ke sanemuufeemŏ tsakeŏ ye Ghana wiemŏi srŏtoi le amlī.
2. Titri le, gbeiwiemŏi damŏŏ shi akē:
 - a. Feelŏi ye sanemuu mli.

Anaa gbeiwiemɔi ye Ga wiemɔ le mli ye feelɔi agbehe. Efoɔ shidaamo ye klenklen gbehe ye sanemuu mli, titri le ye wiemɔi ni afoɔ ametoo ye Feelɔ, Feemɔwiemɔ ke Helo gbehei le. Nɔkwemɔnɔ:

- i. **Akoshia** tee soomɔ
- ii. **Woji** ajara ewa.
- iii. **Nilee** ji samfee keha kunimyeli

Ye nɔkwemɔnii ni eho le mli le, wɔna **Akoshia**, **woji** ke **nilee** ye feelo gbehe.

- b. Helo ye sanemuu mli, nɔ ni aheɔ ke mɔ ni heɔ ni ji helo tuunɗu

Gbeiwiemɔi hu nyɛɔ damɔɔ shi ake helo ye sanemuu mli. Helo le nyɛɔ efeɔ nɔ ni aheɔ loo helo tuunɗu. Nɔkwemɔnii:

- i. Wɔhe **wolo** wɔha Ama.. (nɔ ni ahe).
- ii. Miha **manɗsebi** le pen. Helo tuunɗu(Indirect object).
- iii. Kwaku ke Osofo le **nii**. (nɔ ni ahe)
- iv. Akua he tɔfi eha **Ayite**. (helo tuunɗu)

- c. Gbeiwiemɔi hu tsuɔ amenii tamɔ kadilɔi ni tsuɔ enii ake subaŋ. Eji gbeiwiemɔ ni kadiɔ gbeiwiemɔ kroko.

- i. **Rɔba** gagba le ye Aku de.
- ii. Aŋa sukuu **agbo** le.
- iii. Amehe **kooloo wolo** baagi.

- d. Wiemɔ ni tere gbeiwiemɔ sanekuku:: gbeiwiemɔi nyɛɔ damɔɔ shi ake yitso ye gbeiwiemɔ sanekuku mli. Nɔkwemɔ nii.

- i. **Pen** jara wa.
- ii. **Tsu** hee le mli edo.
- iii. Wɔye **shia**.
- iv. **Tsu** agbo ko kumɔ ŋmenɛ.

Kadimɔ ake: Mlai ni kuraa sanefeemɔ ke najiangbei tsakeɔ ye wiemɔi srɔtoi komei amlɔi.

Titri le, najiangbei damɔɔ shi ake:

- a. Feelɔi ye sanemuji amlɔi. Nɔkwemɔ nii:
 - i. **Mitee** sukuu.

- ii. Wɔkwɛɔ sini daa.
 - iii. Amɛŋmɔ jogbaŋŋ.
 - i. Najiangbei hu tsuo nii ake heloi ye sanemuji amlɪ (helɔ tuuŋtu loo nɔ ni ahe) Kwemɔ nɔkwemɔ nii ni baa nɛɛ. Kwashi na lɛ. (Nɔnalɔ).
 - ii. Ama ha lɛ pɛn. (Helɔ tuuŋtu).
 - iii. Ama ha lɛ pɛn. Ama gave her a pen. (Helɔ tuuŋtu)
 - iv. Tsɔɔlɔ lɛ ha wɔ shia nitsumɔ. (Nɔnalɔ).
- b. Ye Ga wiemɔ lɛ mli ake najiangbei ni damɔ feelɔ gbɛhe lɛ fataa feemɔwiemɔ ni nyie esɛɛ lɛ he ni aŋmaa lɛ ake wiemɔkuli kome.

Nifeemɔi

1. Tsɔɔmɔ nɔ ni ji gbɛiwiemɔ koni oha nɔkwemɔ nibii nyɔŋma. Oke onanemɛi lɛ asusu he.
2. Ye mɛi enyɔnyɔɔnyɔ akui amlɪ lɛ tsɔɔmɔ gbɛiwiemɔ gbenaa nitsumɔi enyɔ. Oke ku kroko afata oku lɛ he koni nyesusu nɔ ni nyɛna lɛ he..
3. Tsɔɔmɔ nɔ ni najiangbei ji. Ha nɔkwemɔ nibii enumɔ. Oke oklasi lɛ agba he sane.
 - a. Kanemɔ sane ni baa nɛɛ koni oke ku mli bii lɛ ahala gbɛiwiemɔi ke najiangbei lɛ.
 - b. Halamɔ gbɛiwiemɔi lɛ amlɪ enumɔ koni okɛfee sanemuji ntai. Oke oklasi bii lɛ agba he sane.
 - c. Halamɔ najiangbei lɛ amlɪ ete koni okɛfee sanemuji. Oke oklasi bii lɛ agbaa he sane.

Gbei

Gbei ji kooloi ni ale amɛ jogbaŋŋ ni amɛhe gbɛi ake kooloo naanyo ye je lɛŋ he fɛɛ he. Anaa amɛ ye henɔi ke sui srɔtoi amlɪ. Kooloi naji ejwe tsemɛi ji amɛ, ni amɛje klan weku lɛ mli. Be ko ni blema tsemɛi lɛ eko ŋɔ klan keba shia keye abua gbɔbimɔ lɛ, amɛberŋke gbɔmɛi akui ni amɛsumɔ gbɔmɛi asane. Amɛkase adesai ahe nii ni amɛyɔse gbɔmɛi ahenumɔ tamɔ sanesuɔmɔ, awuiyeli ke gbeyei, ni amɛ hu amɛto he nine pɛpɛpɛ.

Gbei nɛɛ ye nifuu henumɔ srɔto ko. Amenuɔ gbɛemɔi ahe keyaa shɔŋŋ diɛŋtɛ. Nɔ ni haa gbɛi ahe baa sɛenamɔ jogbaŋŋ ji ake anyɛɔ atsɔsɛɔ amɛ ye gbɛi srɔtoi

anɔ kɛtsuɔ nibii srɔtoi. Gbei ni sɔmɔɔ nyɛɔ yeɔ buaa shwilafoi daa, be mli ni gbei ni yɔɔ henumɔ yeɔ buaa amenunɔtsɔmɛi amiisheenamɔ hu nɛɛ, akɛ gbeii yeɔ buaa kɛtaoɔ mɛi ni elaaɛ ni amɛhefu tete po miigbo, ni tsɔɟi kwraa nyɛɛɛ anu amɛhe. Je nibii kpakpai ni gbeii feɔ haa adesai nɛɛ fɛɛ sɛɛ lɛ, amɛwala sɛɛ ekɛɛɛ ni amenyeɔ amɛyeɔ kɛɟɛ afii nyɔŋma keyashio nyɔŋma kɛ enumɔ. Amɛsɔɔmɔ hesɛɛnamɔ lɛ sɛɛ lɛ anaa amɛ akɛ wekumɛi ni asumɔɔ yɛ je lɛ mli fɛɛ.

Nifeemɔi

1. Nyɛtaoa wiemoikulibii ni afoɔ amɛshishi lɛ anitsumɔi. Nyekɛ nyɛhetoi lɛ atoa he nyɛkwea.
 - a. Kasɛɔ nileɔ lɛ fa gbɛ nyɛ.
 - b. Mike shika maje Adote.
 - c. Tsɔɔɔ lɛ ŋma nii yɛ tao hee lɛ nɔ.
 - d. Amɛshi kɛtee Navrongo.
 - e. Gbɛfalɔ lɛ he bodobodo eha lɛ.

Sanebimɔi

1. Okɛ bo diɛntɛ owiemɔi atsɔɔ wiemɔ epithet shishi. Ha nɔkwemɔ nii enyɔ ni okɛ onanemɛi lɛ asusu he.
2. Otsɔɔlɔ lɛ baaha bo sane ko ni tɔmɔi yɛ mli. Kanemɔ sane lɛ koni otao tɔmɔi lɛ.
3. Nyɛgbaa najiangbɛi ni damɔ shi akɛ nɔnalɔ kɛ helɔ nitsumɔi ahe sane yɛ owiemɔ ni okaseɔ lɛ mli. Nyɛkɛtoa wiemɔi krokomei ni ole anɔ he.
4. Ha gbɛiwiemɔi enumɔ ni miitsu nii akɛ wiemɔkuku ko yitso yɛ sanemuu mli yɛ owiemɔ ni okaseɔ lɛ mli. Okɛ oklasi bii lɛ agba he sane.
5. Yɛ mɛi enyɔnyɔnyɔ akui amli lɛ, nyɛɲmalaa sanemuji nyɔɲma ni najiangbɛi ji feelɔi ni yɔɔ mli ni nyɛkwɛa akɛ aɲmalaa amɛ kɛ feemɔwiemɔi lɛ atsaraa lo. Nyɛkɛtoa Ghana wiemɔi krokomei anɔ he ni nyɛgbaa he sane yɛ klasi.

EXTENDED READING

1. Fromkin, V. & Rodman, R. & Hyams, N. (2007) Introduction to Language. (Eighth edition) Thomson Wadsworth.
2. Click on the link below for a video on noun functions in English grammar.
3. Noun Functions in English Grammar with Examples

MLAI

Nyekase sutsɔɔlɔi momo. Yε kui amlɩ lε, nyε kε sutsɔɔlɔi atsεrεa sanemuji ni abaanye akεsusu wiemɔi ni baa nεε.

- a. Oklasi lε
- b. Onaanyo kpakpa lε
- c. Osukuu lε
- d. Oweku lε

Nilee ni yɔɔ kadilɔi/sutsɔɔlɔi amlɩ miitsɔɔ wiemɔkulibii ni kadiɔ gbeiwiemɔ ko. Sutsɔɔlɔi/kadilɔi miitsɔɔ wiemɔkulibii ni tsɔɔ nɔ ko pɔtεε yε mɔ ko loo nɔ ko he

- a. Misumɔɔ shia memeji.
- b. Gbeke nuu lε kwɔ asan̄ eta loo.
- c. Aku he yε oya fe enyemi nuu lε.

Yε (a) lε, wiemɔ “momo” lε miisusu shia he nɔ ni wielɔ lε sumɔɔ lε he. Yε (b) lε, wiemɔkulibii kwɔ kε eta loo miitsɔɔ jebɔ mli ni gbeke nuu lε yɔɔ. Yε (c) lε mli lε, wiemɔkulibii *oya fe* kε nibii enyɔ miito he, Aku kε enyemi nuu lε he yε oya yε nɔ ko feemɔ mli.

Mlai/Sutsɔɔlɔi anitsumɔ

Mlai loo gbei anɔ ni sutsɔɔlɔi tsuɔ nii yε Ga mli:

1. Ekadiɔ gbeiwiemɔ yε sanemuu mli. Nɔkwemɔnɔ:
 - a. Okpɔn̄ɔ diŋ lε joɔfoi fe okpɔn̄ɔi krokomei lε.
 - b. Mina tsu agbo ko.
2. Amεbaa yε gbeiwiemɔ ni amekadiɔ lε sεε.
 - a. Shia diŋ lε ekumɔ..
 - b. Yoo agbo ko etee shia.

Nyekase sutsɔɔlɔi henɔi yε nikasemɔ ni eho momo lε mli.

Nɔkwemɔ nibii ni ahahai nε:

Mɔsεεgbe tsɔɔlɔ kε bɔ ni aketsuɔ nii yε sanemuu mli.

- a. Nεke tsɔne nεε yε ehee.
- b. Nεke tsu nεε, mitse ataa nɔ ni.

Nii ke nii ahetoo ke bo ni aketsuo nii ye sanemuu mli.

- a. Niyenii nee jara waaa fe mino le.
- b. Oshika le sheee mino le.

Kadilo ni tsoo yifale ke bo ni aketsuo nii ye sanemuu mli.

- a. Mihe omoo ko.
- b. Woji babaoo ye mideka le mli.

Mohewiemoo kadilo (qualifier) ke bo ni aketsuo nii ye sanemuu mli.

- a. Tsone le egbo.
- b. Niyenii le ye akono.

Nifeemo 1 (Mɛi enyonyonyo anitsumo):

1. Kwemo sutsoolo wiemokulibii nyoma ni aha nee. Ke afee afee wiemomuu. Keji obaanye po le, kaa ni oke wiemokulibii le afee sanemuu nta loo sanemuu hanjisihi.
 - a. Naakpee
 - b. Anihao
 - c. mlifu
 - d. Blema
 - e. agbo
 - f. Ja
 - g. Hietse
 - h. Suomo
 - i. Blema nii
 - j. Wa
2. Agbene oke onaanyo le akwe nokwemo nibii le jeboo. Meni oyose? Feemo klalo ake oke klasi le baasusu no ni oyose le.

Nifeemo 2

1. Ha sutsoolo nokwemo nibii nyoma.
2. Ke nokwemo nibii enumo afee sanemuji ye henoi nee ahe.
 - a. Simple

- b.** Sanemuu nta
 - c.** Sanemuu haŋtsii
- 3.** Susumɔ mlai ni yoo sutsɔɔɔɔi amlɩ ketsɔ nɔkwɛmɔ nibii ni aŋma la lɛ ahe.

Sanebimɔ Ekonɔ

1. Kanemɔ sane ni baa nɛɛ koni ohala loo oyɔse sutsɔɔlɔi nyɔŋma ni yɔɔ mli.

Mɛi babaoɔ miyyɔse gbɛi anɔ ni wɔnifeemɔi fiteɔ wɔhewɔŋ lɛ. Sa ake wɔtsɔɔ gbɛi strɔtoi anɔ ni wɔbaatsɔ kɛsaa wɔhewɔŋ koni emli atse lɛ aka wɔfɛɛ wɔtsuii anɔ. Shi mon, mɛi fioo pɛ ni yɔɔ nilee ye gbɛi anɔ ni atsɔɔ kekuraa wɔhewɔŋ ni emli atse. Bɔ ni wɔkwɛɛɛ loo wɔwaaa kɛ kuraaa wɔhewɔŋ lɛ miiha daa gbo kɛ gbienaa lɛ wɔhewɔŋ miifite. Nɔkwemɔ nɔ; gbɛi gbohii anɔ ni atsɔɔ ketsiɔ jwei ashwieɔ, jwei tsimɔ kɛ shwiemɔ, hei ni esaaa ni ake rɔbai ashwie k.n k.n. Keji akwɛɛɛ ni agu subanji gbohii nɛɛ lɛ, ebaashe be ko lɛ, ebaato yinɔbii ni baa lɛ ye neke subanji nɛɛ ahe. Eji mi kɛ bo gbenaa ake bɔ fɛɛ bɔ ni ji lɛ wɔwa kɛfɛɛ nɔ ni sa kɛwa kekura wɔhewɔŋ jogbanɔ. Eji wɔgbenaa ake wɔsusu gbɛi anɔ ni wɔbaatsɔ kekura shikpɔŋ ni Naa Nyɔŋmɔ kɛha wɔ lɛ. Toigbele hesɛɛnamɔi ketsɔ wɔsubanji gbohii gbii ete nɛɛ ji daadaa faa ni gbaa ŋa kɛ nibaanii ni anaaa loo eba shi lɛ k.n k.n.

2. Kɛ sutsɔɔlɔi ni ohala loo ona lɛ afee sanemuji nyɔŋma.
 - i.

EXTENDED READING:

1. Adomako, K., Odoom, J. and Sackitey, M. (2023). *Akan kasa nhyehyɛɛ wɔ Asante Twi mu*. Adonai Publications Limited (Topic on verbs, nouns and adjectives)
2. Amegashie, S.K. (2004). *Evegbe ɲɔɲɔ*. Aflao: Victus Printing Services, Market Square
3. Fromkin, V. & Rodman, R. & Hyams, N. (2007). *Introduction to Language* (Eighth edition). Thomson Wadsworth. (topic on verbs, adverbs, nouns and adjectives)
4. Joshi, M. (2021). *Nouns in the English Language: Types and examples*. Manik Joshi. (Topic on nouns)
5. Thakur, D. (1998). *Linguistics simplified: Syntax*. Delhi: Bharati Bhawan. (open word class which are nouns adjectives, verbs and adverbs)

FEEMŌWIEMŌI

Feemŏwiemŏ ke mligbalalbi kesanemuu feemŏ ye Ga mli kpaɔ mlai komɛi agbɛ kenitsumŏ

Mlai nɛɛ kenitsumŏ yeŏ buaa keŋmalaa saji le jogbaŋŋ ni kanelŏ le nuŏ nŏ ni oŋma le shishi ke emlile. Mlai ni kŏŏ niŋmaa he ye wiemŏ ko mli le kenitsumŏ yeŏ buaa ni oŋmaa nii ni shishinumŏ le feŏ faŋŋ ye Ga wiemŏ le mli

Dani wŏbaakwe mlai le nyɛhaa wŏkaia nŏ ni feemŏwiemŏi ji. Naa nŏkwemŏ nibii komɛi. Feemŏwiemŏi ji wiemŏkulibii ni adiki mli le.

1. Okwaafonyo le **huŏ** koo keji humŏ bei she.
2. Gbekeɓii le **nyieŏ** keyaa sukuu daa Sohaa.
3. Wŏhuruŏ daa leebi **kegbŏleŏ** wŏkpoiaŋ.

Feemŏwiemŏ ji wiemŏ ni tsŏŏ nifeemŏ ko, be ni nŏ ko tee nŏ loo ba le ha. Feemŏwiemŏ ji nŏnalŏ loo helŏ le yitso (predicate) ye sanemuu mli.

Mlai ni tsŏŏ feemŏwiemŏ kenitsumŏ ye sanemuu mli.

Wiemŏi titri ye mlai srŏtoi ni kuraa feemŏwiemŏi kenitsumŏ. Mlai le ekomɛi nɛ:

1. Feemŏwiemŏi tsŏŏ nŏ ni feelŏ le feŏ ye sanemuu le mli. Nŏkwemŏ nŏ: Gbee le bolŏŏ ye agbo le naa daa.
Ye bie le feemŏwiemŏ 'bolŏŏ' le tsŏŏ nŏ ni feelŏ 'gbee' le feŏ ye agbo le naa.
 - a. Gbekeɓii le **taa** okŏokpe keyaa sukuu daa leebi
Feemŏwiemŏ taa le tsŏŏ nŏ ni feelŏ (kaselŏ) le feŏ.
2. Feemŏwiemŏi tsŏŏ be ni feelŏ le kefee nŏ ko. Nŏkwemŏ nŏ:
Kojo **na** miishɛɛ be ni agbe kaa le naa le.
Bie le, feemŏwiemŏ "na" tsŏŏ nŏ ni mli ni feelŏ 'Kojo' yŏŏ be ni agbe kaa le naa le.
3. Feemŏwiemŏ le ji feemŏwiemŏ sanekuku le yitso. **Nŏkwemŏ nŏ**
 - a. Tsŏne bibioŏ le hiɛ foi waa.
Feemŏwiemŏ 'foi' ji feemŏwiemŏ sanekuku le yitso, 'hiɛ foi waa'
 - b. Kaselŏi le taa okŏokpe keyaa sukuu daa leebi.
Bie hu le feemŏwiemŏ 'taa' le ji feemŏwiemŏ saanekuku le yitso, 'taa okŏokpe keyaa sukuu daa leebi.'

Ofaine kadimɔ akɛ: mlai krokomei ye ni kudɔ feemɔwiemɔi aɲmalamɔ ye Ga wiemɔ le mli pɛ. Ekomei nɛ:

3. Ye wiemɔi komei amlɪ le aɲmaa feemɔwiemɔ kome too amaa shi ni aketsaaa najiangbei ye sanemuu mli shi ye Ga wiemɔ le mli le akɛ feemɔwiemɔ le fataa najiangbei le he akɛ wiemɔkuli kome keji wiemɔkuli ko efooo amɛteɲ Nɔkwemɔ nɔ:
 - a. Eye nii. .

5. Ye Ga wiemɔ le mli le keji najiangbei ko ba ye feelɔ gbɛhe le aɲmaa najiangbei le ke feemɔwiemɔ le atsaa. Nɛkwemɔ nɔ:
 - i. Amɛtee.
Amɛ le najiangbei ni, ni tee le feemɔwiemɔ ni.
 - ii. Eye nii .
Ye Ga wiemɔ mli le ‘E’ le najiangbei ni (feelɔ.) ni ‘ye’ le feemɔwiemɔ ni.

Nifeemɔi

Tsoomɔ nɔ ni ji feemɔwiemɔ ye bo diɛntse owiemɔ mli. Ha nɔkwemɔ nii nyɔɲma.

Nifeemɔ 2

Oke nɔkwemɔ nii ni yɔɔ nifeemɔ 1 le mli afee sanemuji enumɔ.

- a. Sanemuji
- b. Sanemuu nta
- c. Sane haɲtsiɲɲ.

Nifeemɔ 3 (Mɛi enyɔnyɔɔnyɔ aku)

1. Kwemɔ feemɔwiemɔi nyɔɲma ni baa nɛɛ. Oke amɛ afee sanemuji. Keji oonyɛ le, ha ohe nitsumɔ koni okɛfee sanemuu nta ke sane haɲtsiɲɲ. Nɔkwemɔ nii le fɛɛ ye amrɔbe mli ni obaanyɛ otsake keya be ni osumɔ mli
 - a. boo

- b. tere
- c. suomɔ
- d. fu
- e. tsɔ
- f. tɛ
- g. kasemɔ
- h. sumɔɔ
- i. henumɔ
- i. hejɔɔmɔ

Oke onaanyo akwe onitsumɔ le. Ani onitsumɔ le ke mlai le yaa pɛpɛpɛ lo?
Oke klasi muu le agba nɔ ni ona le he sane.

Nifeemɔ 4

- a. Gbalamɔ feemɔwiemɔ henɔi ni okase le amlɔi otsɔɔ
- b. Ha feemɔwiemɔ henɔi ni okase le koni oha eko fɛɛ eko nɔkwemɔ nii enumɔ. Kɔ henɔi le fɛɛ eko mli ekome koni okɛfee sanemuu.

Nifeemɔ ni fata he

Ye kui amlɔi le nyɛgbalaa mlai ni kuraa feemɔwiemɔi ke sanefee mɔ mli nyetsɔa. Nɔkwemɔ nɔ:

- a. Keji najiangbei ba ye feelɔ gbɛhe.
- b. Keji najiangbei le ye helɔ gbɛhe.

Mligbalalɔi

Wɔkwɛ feemɔwiemɔ mlai ni adamɔɔ nɔ ketsɛrɛɔ sanemuji momo. Agbenɛ nyɛhaa wɔkwɛa mligbalalɔi ahe mlai ni adamɔɔ nɔ ketsɛrɛɔ sanemuu.

Nyɛkaɔ nɔ ni mligbalɔi ji?

Mligbalalɔi ji wiemɔkulibii loo sanekukuji ni haa anuɔ feemɔwiemɔ ko shishi jogbanɗ ye sanemuu ko mli ketsɔ he ni afee nɔ ko ye, be ni afee nɔ ko ke henumɔ ko ni teenɔ nɔ.

Mligbalalɔ nɔkwemɔ nibii ye sanemuu mli nɛ:

1. Amɛba **biɛ**. (he ni nɔ ko tee nɔ ye)

2. Woshe leebi **ŋmeji kpawo**. (be ni no ko tee no)
3. Boolutswaa kuu le tswa boolu le ke **miishɛɛ**. (henumo ye no ko ni tee no he)
Mligalalɔi ni yoo sanemuji neɛ amlɔi ji; **biɛ, ŋmeji kpawo** ke **miishɛɛ**.

Mlai/bɔ ni ametsuo nii

Mlai ni adamoo no ketsereɔ mligbalalɔi sanekuku le tsakeo ye wiemoi srɔtoi amlɔi.

Mlai/bɔ ni ametsuo nii ye wiemo mli komei ne:

1. Mligbalalɔi damoo shi ake yitso ye mligbalalɔi sanekuku mli.

Nokwemo no:

- a. Hii le wie ke **gbee ni naa wa**.
- b. Nifeemo le ba naagbee **trukaa**.

Mligbalalɔi ni ji **gbee ni naa wa** ke **trukaa** le damoo shi ake mligbalalɔi sanekuku ni amedamoo shi hu ake mligbalalɔi sanekuku le yitseɪ.

2. Ametsuo nii ake kadilɔi ye mligbalalɔi mli.

Nokwemo no;

- a. Ameshwe **jogbanɲ**.
- b. Sukuubii le bɔ amehɛ mɔdeɲ **ketɛke no**.

Ye sanemuji ni wokwe momo le mli le, mligbalalɔi ‘**jogbanɲ**’ le miikadi loo tsoo bɔ ni shwemo le tee eha, ni mligbalalɔi **ketɛke no** hu miikadi loo miitsoo bɔ ni amebɔ amehɛ mɔdeɲ ameha.

Nifeemo 1

- a. Nyɛgbalaa mligbalalɔi amlɔi ye nyekui amlɔi ni nyeketo shishitsɔomɔ ni kui krokomei le baaha he.
- b. Ha mligbalalɔi nokwemo nibii nyɔɲma ye Ga mli.

Nifeemo 2

Ke nokwemo nibii ni yoo (a) le afee sanemuji enumo ye sanemuji srɔtoi ni baa neɛ ahe:

- a. Sanemuu
- b. Sanemuu nta
- c. Sanemuu hanɲsiɲɲ

Nifeemɔ 3 (Mɛi enyɔnyɔnyɔ nitsumɔ)

1. Nyekwea mligbalalɔi nyɔŋma nɛɛ. Nyekɛfea sanemuji. Kɛji obaanye po lɛ, kaa ni okɛ wiemɔkulibii lɛ afee sanemuu nta loo sanemuu haŋtsiŋɛ.
 - a. waa
 - b. ŋmɛnɛ
 - c. biɛ
 - d. fɛfɛo
 - e. oya
 - f. wɔ
 - g. agbonaa
 - h. titri
 - i. Fɔɔfeemɔ
 - i. Biane

Agbenɛ nyɛ kɛ nyɛnanɛmɛi asusua jebɔ ni yɔɔ nɔkwɛmɔ nibii lɛ ahe. Ani nyɛnɔkwɛmɔ nibii lɛ kɛ nikasemɔ lɛ shiɔ kɔŋ? Feemɔ klalo akɛ okɛ klasi lɛ baasusu nɔ ni oyɔsɛ lɛ he.

SANEBIMŌ EKŊŋ

1. Kanemŏ sane nŋe jogbaŋŋ koni ohala feemŏwiemŏi ke mligbalalŏi ni yŏŏ sane le mli.

Be ni amegbe amenitsumŏ naa oyayai le, amesaa amŋtee mli fitsofitso kekwe ake nŏ fŋe nŏ eja pŋpŋpŋe lo. Amŋke hemŏkeyeli tee amŋke amenitsumŏ le yaha ejaake amŋle jogbaŋŋ ake amŋbŏ amŋhe mŏdeŋ waa. Tsŏŏlŏ le tee nitsumŏ le mli ni ewoso eyitso kemiitsŏŏ nitsumŏ kpakpa ni amŋtsu. Sukuubii le na amŋhewŏŋ miishŋe ake amŋnye amŋtsu nitsumŏ le fe bŏ ni po asusuŏ le.

2. Daamŏ mlai ni okase le nŏ koni oke feemŏwiemŏi ke mligbalalŏi ni oyŏse ye sane le mli afee sanemuji enumŏ.

EXTENDED READING

1. Owu-Ewie C. (2020). *Mfantse kasa ngyegyee na kasa mbra ho adzesua buukuu ma nsowdo skuul esuafo*. Shine Prints Company Limited.
2. Ago, S.A. (1992). *Agoo*. Ghana Publishing Company.
3. Amartey A.A. (1966). *Omanye aba*. Bureau of Ghana Languages.

REFERENCES

1. Haspelmath, M. (2001). Word classes and parts of speech. *In International Encyclopedia of the Social and Behavioral Sciences* (pp16538-16545). Doi:10.1016/Bo-08-043076-7/02959-4
2. Lier, E. V. (2024). *The Oxford handbook of word classes (oxford handbook)*. Oxford University Press.
3. Miguel, J., M. G. (2015). *Transitivity and word classes*. <https://doi.org/10.1075/ivitra.9.13gar>
4. Prempeh, A. A. (2021). *Asante Twi Nyansapɔ*. Premsco Publications.
5. Simone, R. & Masini, F. (eds). (2014). *Word classes (Current issues in linguistic theory)*. John Benjamins Publishing Company.

ACKNOWLEDGEMENTS



Ghana Education Service (GES)

